

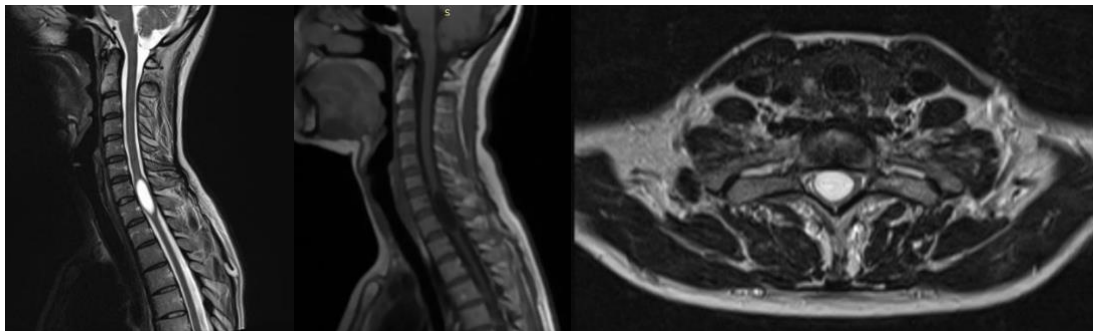
Case challenge 8- 2026

A 39 years old female was first presented to consultation with a two years history of left cervico-brachial syndrome. There was no history of trauma. Her past medical history revealed only migraine with aura. The neurological examination showed only a slight left C7 sensory deficit, and negative spinal cord involvement. MRI was performed and revealed an intramedullary cystic lesion from C7 to T2 level. MRI with contrast showed no enhancement.

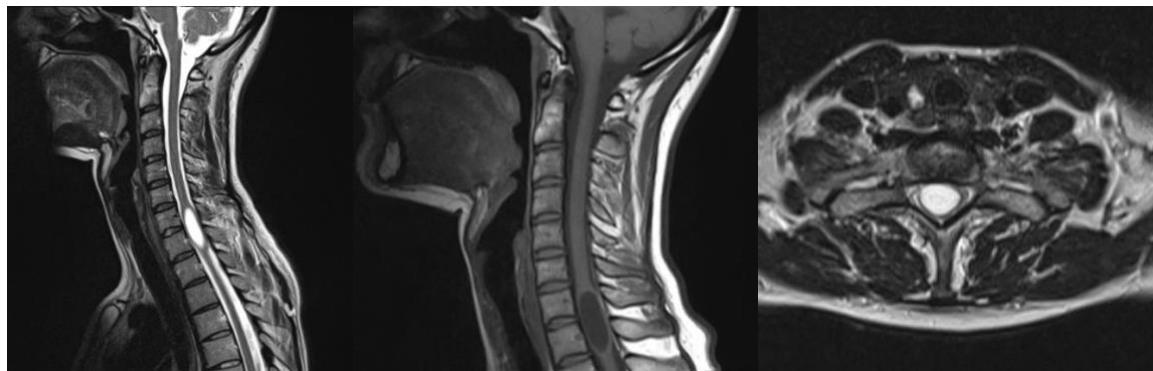
Somatosensory evoked potentials were normal in the upper limbs, while there is a slowed central spinal conduction velocity for lower limbs. Motor evoked potentials showed slowed conduction velocity as well, resulting in bilateral corticospinal dysfunction.

Regarding her clinical presentation, a decision not to perform any intervention but to wait and watch was chosen. MRI every six months for the first year was recommended and later every year. Her last evaluation didn't show any new signs or symptoms, nor lesion growth.

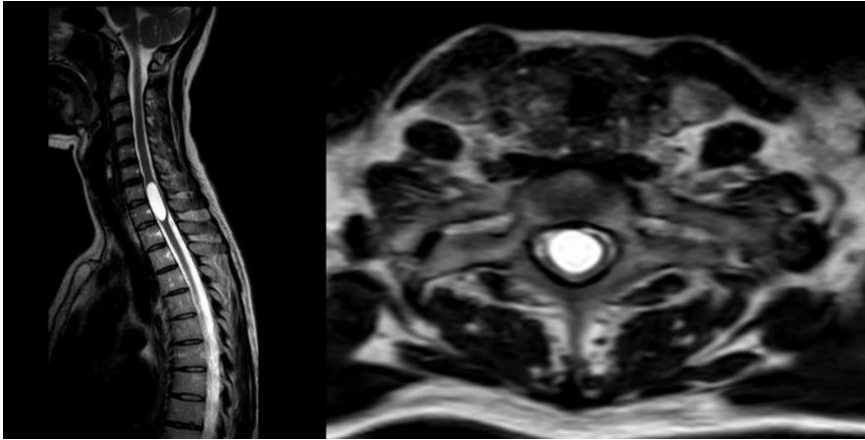
What is the diagnosis? What is your opinion?



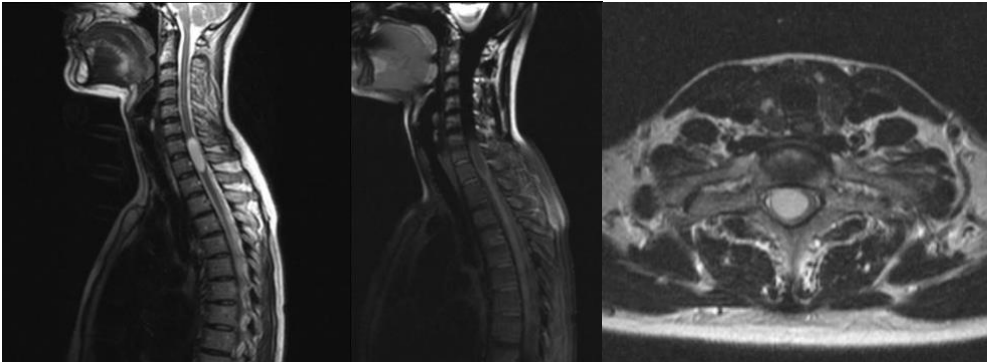
MRI in 2022



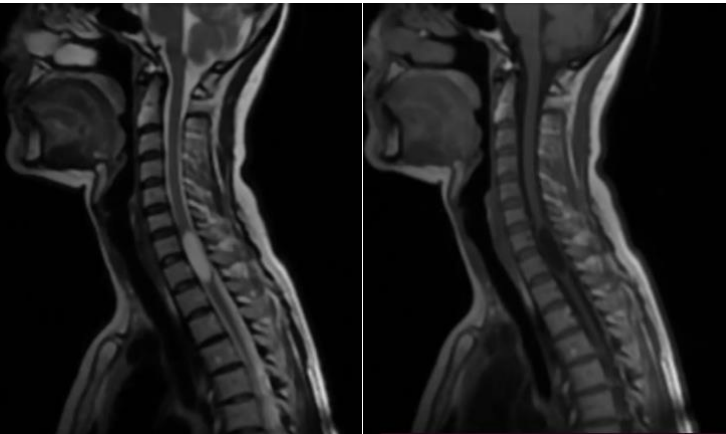
MRI in 2023



MRI in 2024



MRI in 2025



MRI in 2026